

TWISTED LOGIC

Words & Music by Guy Berryman, Jon Buckland, Will Champion & Chris Martin

Trust guitar:
 6 = D₄ 3 = C₄
 5 = A₃ 2 = B₃
 4 = D₃ 1 = D₂

♩ = 52

E⁷
G⁷
Fm⁷/E⁷
Fm⁷/E⁷

I. Sun - light up - end up my eyes to see for the

E⁷
G⁷
Fm⁷/E⁷
Fm⁷/E⁷

few time, it up - end them up

E⁷
E⁷
Fm⁷/E⁷
Fm⁷/E⁷

to - night it - sure will run dry and out for the

Chords: E^b , E^b , Fm^b/E^b , Fm^b/E^b

first time
 it - tern will run

Chords: E^b , B^b , F , D^b

Chords: Fm , Fm , Fm , Fm

Chords: Fm , Fm , Fm , Fm

Chords: F , E^b , Fm^b/E^b

2. That - deeds of years is the to - time
 (A) - at - od thus defined and in - to - dal

Chords: F , E^b , Fm^b/E^b

This system contains the first three measures of the song. The vocal line is in treble clef with a key signature of one flat and a 4/4 time signature. The piano accompaniment consists of a right-hand part in treble clef and a left-hand part in bass clef. The lyrics are: "There could be some - one - else out - there, look - ing for some - one - else."

This system contains the next three measures. The vocal line continues with the lyrics: "Life means... it's... earth - ly." The piano accompaniment continues with chords and a bass line.

This system contains the next three measures. The vocal line has the lyrics: "Don't fight for the wrong side, And you are not wrong to say who you are, who does this for -"

This system contains the final three measures. The vocal line has the lyrics: "But I'm not like, to say how you feel, in be - long to all of us." The piano accompaniment concludes the system with a final chord and bass line.

A7m/Eb

To Code 0

B

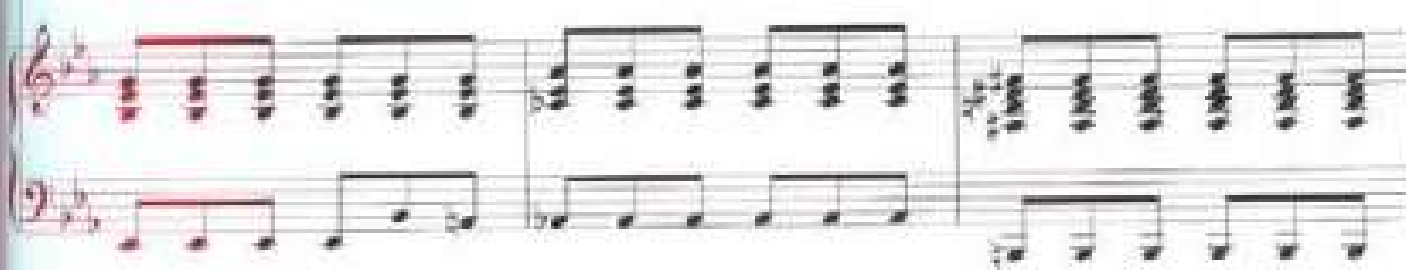
D7



E7

A7m

F#



D7

F#



You'll go



B

D7

E7



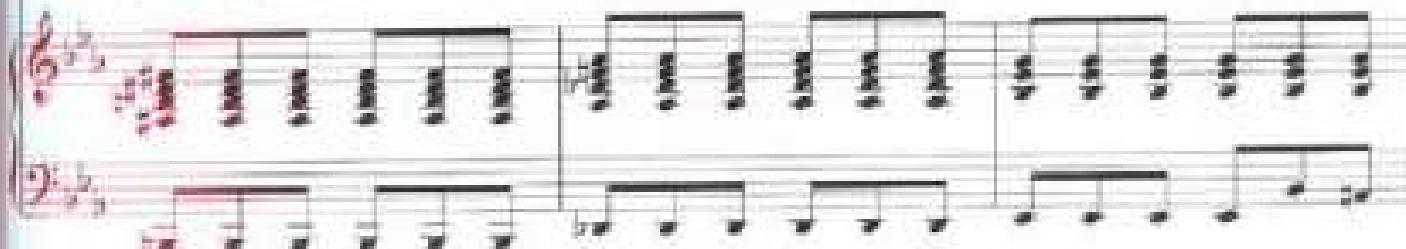
back - wards

but then

you'll go

for - wards

a - gain



A7m
B
D7m

You'll go back - words, but then you'll go

E7
E7
A7m/E7
F#7m/E7

Going

E7
E7
A7m/E7
F#7m/E7

D.S. al Coda

3. Coda

Coda
F#m
E7/E
B

102

102

You'll go

back - wards but then you'll go for - wards a - gain.

1st Instrumental

You'll go back - wards but then you'll go

1, 2, 3.

for - wards You'll go

4.